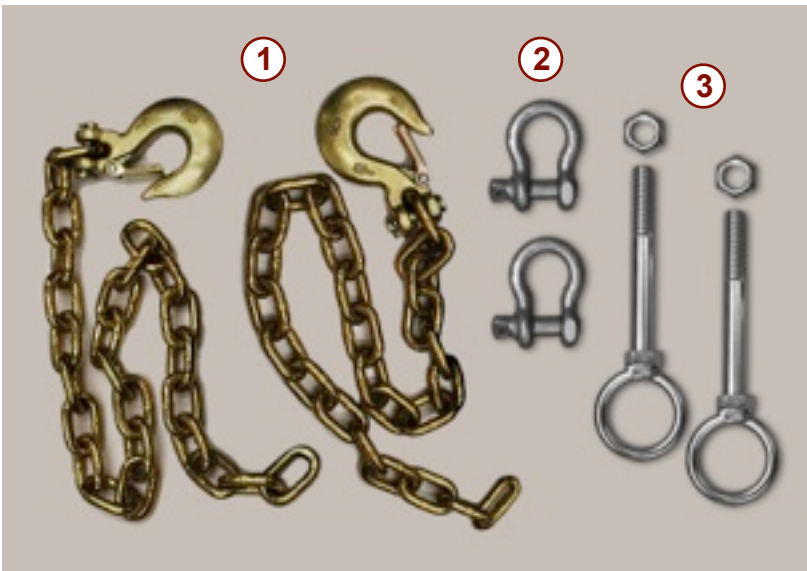
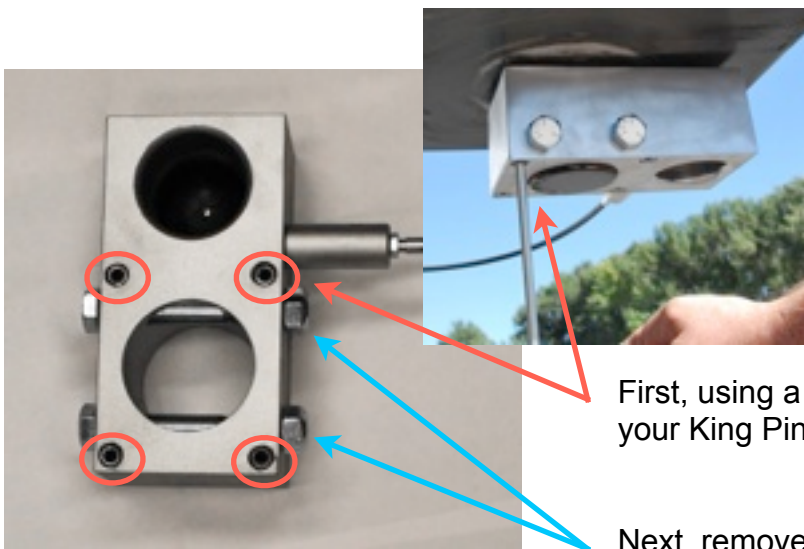


Ultimate Connection Safety Chains (part # 3230) INSTALLATION INSTRUCTIONS



Parts List:

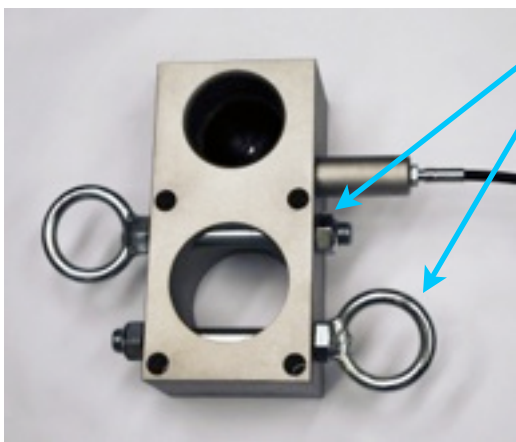
1. Safety Chains with hooks (2 pcs)
2. Chain clasps (2 pcs)
3. Eyelet bolts with nuts (2 bolts, 2 nuts)



First, using a 1/4" allen wrench, loosen the 4 set screws on your King Pin Coupler block (circled in red).

Next, remove the 2 Coupler bolts that attach the Ultimate King Pin Coupler to your king pin, and then replace them with the eyelet bolts as shown below left – **keep the Coupler attached to the king pin.**

NOTE: DO NOT FULLY TIGHTEN THE NUTS YET.



Be sure NOT to place the eyelet end of the bolt next to the remote latch connector as shown above.



(Fig. A)

Reinstall the King Pin Coupler Block:

Make sure the coupler block is centered to the pin box (Fig. A).

Using the 1/4" allen wrench, tighten the 4 set screws to 40-ft. lbs of torque (Fig. B).

Now tighten the Eyelet nuts until they are snug (Fig. C).



(Fig. B)



(Fig. C)



Insert the safety chain clasps through the eyelet bolts as shown left and then attach them to the end link in each chain.

Finally, attach the chain hooks to the safety loops in the bed of your tow vehicle.

